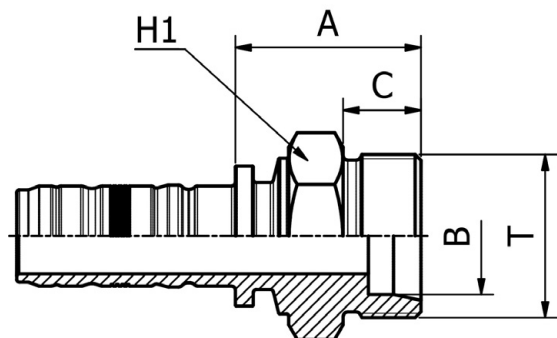


DIN STANDARD CONNECTIONS

M71210



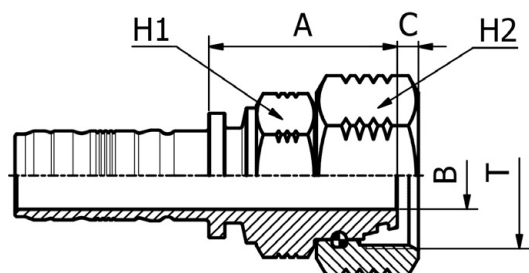
METRIC
MALE 24° CONE SEAT HEAVY DUTY
DIN 20066 / ISO 12151-2

| PART. REF. | HOSE BORE | | | Thread | Pipe | DIMENSIONS mm | | | | | | |
|--------------|-----------|------|--------|--------|------|---------------|------|------|------|---|----|--|
| | DN | Dash | inch | | | T | mm | B | A | C | H1 | |
| M71210-12-30 | 19 | - 12 | 3/4" | M 30X2 | 20.0 | 14.5 | 39.5 | 16.0 | 32.0 | | | |
| M71210-12-36 | 19 | - 12 | 3/4" | M 36X2 | 25.0 | 14.5 | 44.5 | 18.0 | 36.0 | | | |
| M71210-16-36 | 25 | - 16 | 1" | M 36X2 | 25.0 | 19.5 | 46.0 | 18.0 | 36.0 | | | |
| M71210-16-42 | 25 | - 16 | 1" | M 42X2 | 30.0 | 19.5 | 47.5 | 20.0 | 46.0 | | | |
| M71210-20-52 | 31 | - 20 | 1.1/4" | M 52X2 | 38.0 | 25.0 | 55.0 | 22.0 | 55.0 | | | |
| M71210-24-52 | 38 | - 24 | 1.1/2" | M 52X2 | 38.0 | 30.5 | 55.5 | 22.0 | 55.0 | | | |

FITTINGS 240

DIN STANDARD CONNECTIONS

M81612



METRIC
O-RING FEMALE 24° CONE HEAVY DUTY
DIN 20066 / ISO 12151-2

| PART. REF. | HOSE BORE | | | Thread | Pipe | DIMENSIONS mm | | | | | | |
|--------------|-----------|------|--------|--------|------|---------------|------|-----|------|------|----|----|
| | DN | Dash | inch | | | T | mm | B | A | C | H1 | H2 |
| M81612-12-30 | 19 | - 12 | 3/4" | M 30X2 | 20.0 | 12.5 | 49.5 | 3.2 | 32.0 | 36.0 | | |
| M81612-12-36 | 19 | - 12 | 3/4" | M 36X2 | 25.0 | 14.5 | 52.0 | 4.1 | 36.0 | 41.0 | | |
| M81612-12-42 | 19 | - 12 | 3/4" | M 42X2 | 30.0 | 19.5 | 52.5 | 6.0 | 41.0 | 50.0 | | |
| M81612-16-36 | 25 | - 16 | 1" | M 36X2 | 25.0 | 16.0 | 56.0 | 4.1 | 41.0 | 41.0 | | |
| M81612-16-42 | 25 | - 16 | 1" | M 42X2 | 30.0 | 19.5 | 54.5 | 6.0 | 41.0 | 50.0 | | |
| M81612-16-52 | 25 | - 16 | 1" | M 52X2 | 38.0 | 25.0 | 56.0 | 8.8 | 50.0 | 60.0 | | |
| M81612-20-42 | 31 | - 20 | 1.1/4" | M 42X2 | 30.0 | 19.5 | 56.0 | 6.1 | 46.0 | 50.0 | | |
| M81612-20-52 | 31 | - 20 | 1.1/4" | M 52X2 | 38.0 | 25.0 | 57.0 | 8.8 | 50.0 | 60.0 | | |
| M81612-24-52 | 38 | - 24 | 1.1/2" | M 52X2 | 38.0 | 26.1 | 58.0 | 8.8 | 55.0 | 60.0 | | |